



PRODUCT SPECIFICATION SHEET

Protein Name: Recombinant Pro- L Antigen

Catalog No: RP-

Description: Protein L expressed in *Escherichia coli* (*E. coli*) as soluble protein. Protein L has the exceptional ability to bind through kappa light chain interactions without hindering with the antibody's antigen-binding site.

Concentration: 1-5mg/ml (customizable)

Source: *Escherichia coli* (*E. coli*)

Format: Purified liquid

Buffer: 10mM Tris, pH.8, 1 mM PMSF.

PREPARATION:

Expression System: *Escherichia coli* (*E. coli*)

Tag: 6X histidine tag

Purification: His-tag affinity purification by Immobilized metal ion affinity Chromatography

Purity: >95% as determined by SDS PAGE

Molecular Weight: The predicted size of protein is 35.8 kDa.

Purity: Determined by SDS-PAGE under reducing conditions and visualized by Coomassie Blue staining

Preservative: None

Application: Suitable for use in ELISA and lateral flow as positive control. Use optimum working concentration for particular application.

Shipping: Protein is shipped in ice pack.

Storage: It should be aliquoted as per requirement upon arrival to avoid multiple freezing & thawing cycles.

Long term storage: -20°C to -80°C

Short term storage: 2-8°C

Stability: 3 years from the manufacturing date.

Safety note: Refer to the appropriate safety data sheet (SDS) for additional information.

Reconstitution: The protein can be aliquoted and diluted as per requirement.

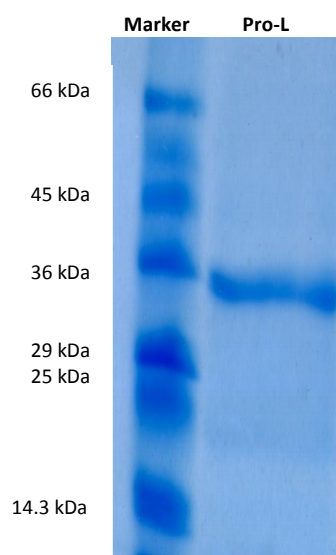


Figure-SDS gel analysis

This product is furnished for LABORATORY RESEARCH or MANUFACTURING



BHAT BIO-TECH INDIA (P) LTD., No. 11A, IV Cross, Veerasandra Industrial Area, Electronics City, Bangalore, Karnataka, India, 560 100



+91-80- 27848000



info@bhatbiotech.com



www.bhatbiotech.com