



# PRODUCT SPECIFICATION SHEET

## Protein Name: **Recombinant Chick chimeric antigen**

**Catalog No:** RP-012

**Description:** Recombinant chikungunya chimeric E1/E2 antigen is Immunoreactive with sera from Chikungunya virus infected individuals.

**Concentration:** 1-5mg/ml (customizable)

**Source:** *Escherichia coli* (*E. coli*)

**Format:** Purified liquid

**Buffer:** 10mM Tris, pH.8, 1 mM PMSF.

## PREPARATION:

**Expression System:** *Escherichia coli* (*E. coli*)

**Tag:** 6X histidine tag

**Purification:** His-tag affinity purification by Immobilized metal ion affinity Chromatography

**Purity:** >95% as determined by SDS PAGE

**Molecular Weight:** The predicted size of protein is **45 kDa**.

**Purity:** Determined by SDS-PAGE under reducing conditions and visualized by Coomassie Blue staining

**Preservative:** None

**Application:** Suitable for use in Elisa and lateral flow as positive control. Use optimum working concentration for particular application.

**Shipping:** Protein is shipped in ice pack.

**Storage:** It should be aliquoted as per requirement upon arrival to avoid multiple freezing & thawing cycles.

Long term storage: -20°C to -80°C

Short term storage: 2-8°C

**Stability:** 3 years from the manufacturing date.

**Safety note:** Refer to the appropriate safety data sheet (SDS) for additional information.

**Reconstitution:** The protein can be aliquoted and diluted as per requirement.

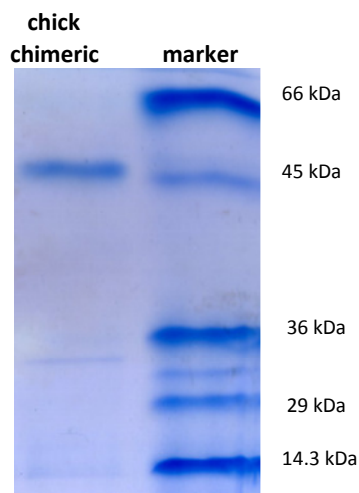


Figure-SDS gel analysis

**This product is furnished for LABORATORY RESEARCH or MANUFACTURING**